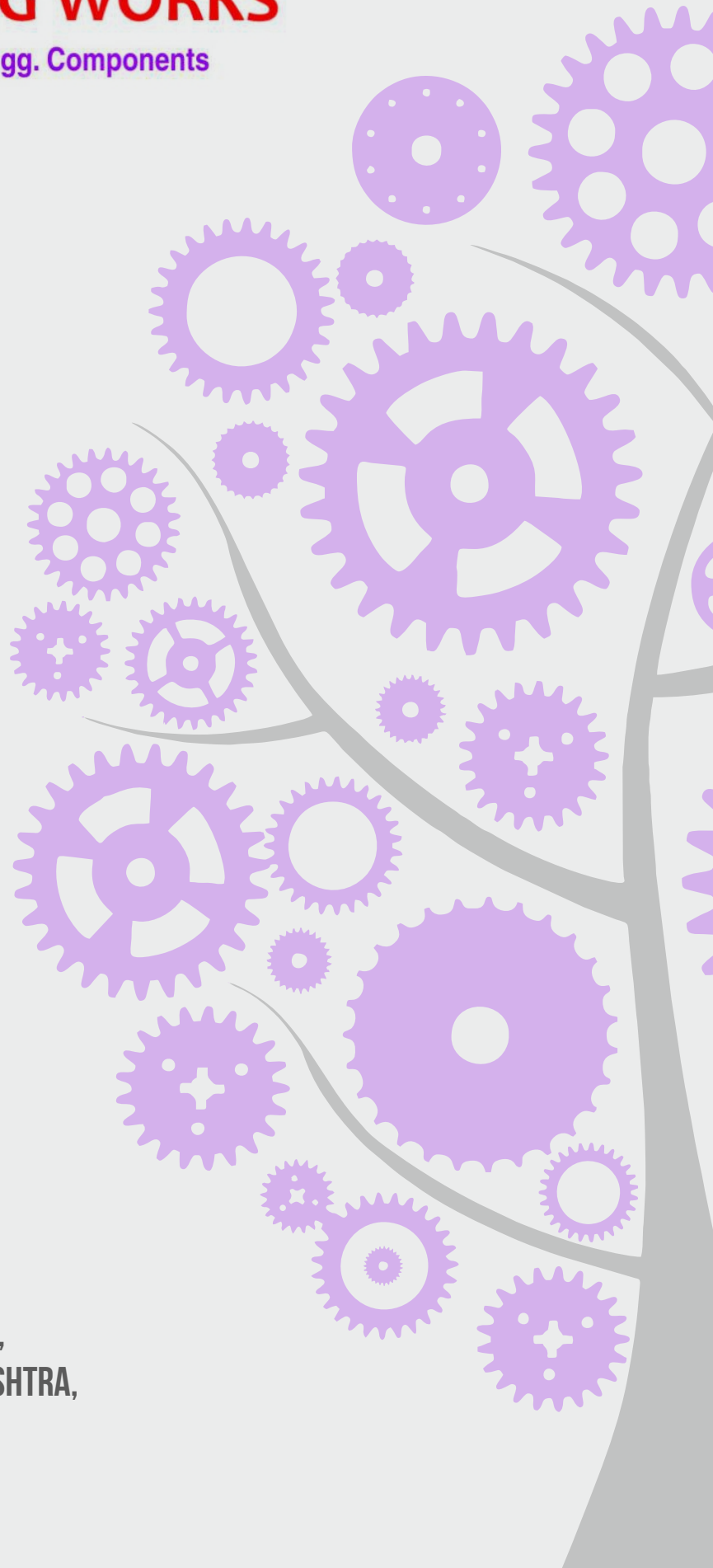


AN ISO 9001 : 2008 COMPANY



CHOUGULE ENGINEERING WORKS

Mfg. Of Precision Gears & Engg. Components



ADDRESS :

R.S.NO.497, PLOT NO.2, MAYUR PHATA,
M.I.D.C.SHIROLI, KOLHAPUR, MAHARASHTRA,
INDIA, PIN - 416122

ABOUT US

Chougule Engineering Works is a small-scale Industry manufacturing of All Types of Precision Gears (Dia 1500mm and internal Dia 800mm) Ground Gears, Engineering components, sub assemblies & Assemblies for various Industries.

Chougule Engineering Works is located at M.I.D.C. Shirol, Kolhapur, on Pune - Bangalore Highway. Kolhapur is one of the best industrial belts in India. Kolhapur is connected to all the major cities in India and has well developed infrastructure facilities.

Success is a resultant of vision and hard efforts. The company was established in 1989 by Late. Mr. Laxman Chougule who was visionary person and embarked upon a journey to serve the growing industrial requirement through quality products.

Chougule Engineering Works has grown with service and customer satisfaction. The basic principles behind the growth are quality, and will for continual development and has harvested rich yields. The value adds to value has become an aspiration for every person associated with Chougule Engineering Works. The young and dynamic team has played a major role in the constantly upward trend.

Mr. Ravindra Chougule, graduate in Production Engineering is working with the company since 2006. The company aims towards customer satisfaction. It is achieved by supplying components / jobs, sub-assemblies, assemblies conforming to the Specified / Agreed specifications adhering strictly to the delivery schedule.

**“The company believes in Producing Quality,
rather than inspecting it”**

For achievement of the above the company has its own quality system amended as per ISO 9001:2008 from DQS-UL. The company focuses mainly on implementation and monitoring of quality system to the root-level, involving and training all employees, concentrating more on preventive actions and making continued efforts for continuous improvements.

SOME FACTS

Name of organization -	CHOUGULE ENGINEERING WORKS [MFG. OF ALL TYPES OF PRECISION GEARS & ENGG. COMPONENTS]
Address of the organization -	R.S.NO.497, Plot No.2, Mayur Phata, M.I.D.C.Shiroli, Kolhapur, Maharashtra, India, Pin - 416122
Telephone -	Mob. 09922591122
E Mail -	rlchouguleengg@gmail.com
Name of proprietor -	Mr. Ravindra L.Chougule B.E. (Production)
SSI Registration No. -	270341101377
VAT TIN No. -	27750587695V
CST TIN No. -	27750587695C
EXCISE NO -	AFXPC2691FEM001
Name of the Banker -	Bank of Baroda (Nagaon Branch - Kolhapur)
Register Member -	Shiroli Manufacturers Association Kolhapur (SMAK)
Certification -	ISO 9001:2008 from DQS-UL

PLANT DETAILS

ESTD.	SHOP FLOOR AREA	OFFICE AREA	POWER
1989	4000 SQ FT	2000 SQ FT	120 HP

MANUFACTURING & INSPECTION FACILITIES

A. MANUFACTURING FACILITIES

NO.	DESCRIPTION	CAPACITY	QTY.
1	CNC HOBBING –HMT LIEBHERR	DIA 400	1
2	GEAR HOBBER-WMW	16 MODULE / DIA 1500	1
3	GEAR GRINDER (Reishauer)	300mm DIA (Upto 5 Module)	1
4	GEAR HOBBER RUSSIAN MAKE	6 MODULE/320 DIA	1
5	GEAR SHAPER- LORENZ	7 MODULE/DIA 1000	1
6	GEAR SHAPER –TOSS	6 MODULE/DIA 500	1
7	GEAR SHAPER MAXICUT	6 MODULE/300 DIA	2
8	CNC TURNING CENTRE-ACE	DIA 350	1
9	VMC –BATLIBOI	750*550*500	1
10	LATHE ANIL MAKE	150MM DIA 400 L	2
11	LATHE RAVI MAKE	200MM DIA 600 L	1
12	MILLING MACHINE HMT MAKE	700 x 250 x 200	2
13	M1TR	600 x 200 x 150	1
14	PILLER TYPE DRILL SEW MAKE	25MM	1
15	PILLER TYPE DRILL EIFCO MAKE	38MM	1

B. INSPECTION FACILITIES

NO.	DESCRIPTION	CAPACITY
1.	GEAR TESTER (DAVID & BROWN)	300MM DIA 500H
2.	VERNIER CALLIPERS (MITUTOYO)	UPTO 1000MM
3.	MICROMETER(MITUTOYO)	0 TO 500 MM
4.	BORE GAUAGES(MITUTOYO)	10 TO 300 MM
5.	DIGITAL HEIGHT GAUGE	600MM
6.	SURFACE PLATE	1000*600 AND 600*600

OUR VALUABLE CUSTOMERS

1. EUROFLEX TRANSMISSIONS LTD, HYDERABAD
2. KTR COUPLINGS,PUNE
3. GHATGE PATIL INDUSTRIES ,KOLHAPUR
4. QUALITAS EXPORTS PVT LTD,KOLHAPUR
5. FISHER BARTON SPECIALIOTY PRODUCTS,USA
6. GRINDWELL NORTON LTD,MUMBAI



QUALITY

1. Raw materials chemical and physical analysis checked by NABL approved lab.
2. All instruments and gauges are regularly calibrated & repaired or scrapped.
3. Checkup system from inward of raw material to its dispatch with trace.



PLANNING

1. Setting well equipped quality lab.
2. Adding advance technology



GOAL

1. Promote a profitable and sustainable business activity that meets the customer's needs.
2. To increase the company's role in relations to social responsibility
3. To provide excellent customer service



FOR CHOUGULE ENGINEERING WORKS

MR. RAVINDRA L. CHOUGULE
PROPRIETOR (09922591122)